



AXB-Series – Axial Flow Fan – Belt Driven Type

Belt driven tube axial duct fans have the motor mounted outside the airstream. This is ideal in applications where the air moving through the duct fan is contaminated, high humidity or filled with hazardous gases or dust. In a belt drive configuration, the motor shaft drives a belt-driven pulley which is connected to a second pulley attached to a propeller shaft. Belt driven duct fans offer multiple ranges of RPM speed because of the many sizes of pulley combinations available, which results in a greater range of CFM. Belt driven tube axial duct fans are a great option when noise is a concern.

Sizes	450 up to 1.000 mm
Motor	IP55, 230/1/50 or 400/3/50
Capacity	up to 70.000 m ³ /h
Pressure	up to 600 Pa
Control	Frequency converter
Casing	Steel coated
Impeller	Plastic / Aluminum
Airflow	Motor \times Impeller / Impeller \times Motor



APPLICATION

AXB fans are used in ventilation installations, where the fan is connected to air ducts at the inlet and outlet and the motor has to be separated from the air stream due to increased temperature or the presence of dust in transported air.

CONSTRUCTION

Axial fan with belt drive designed for duct mounting in the horizontal position. The housing is made of welded steel sheet covered with powder paint. The rotor is made of aluminum and dynamically balanced, according to ISO 1940-1. The hub is made of aluminum. The fans are designed for use within the temperature range -200C to +1200C. On request, we could supply

the equipment tailored to individual customer needs, including: provided with non-standard housing (adjusted length or diameter, made of stainless or galvanized steel). The fans can be supplied in any color from the RAL palette. Fans with a diameter above 1000 mm individually selected to the specified working point.

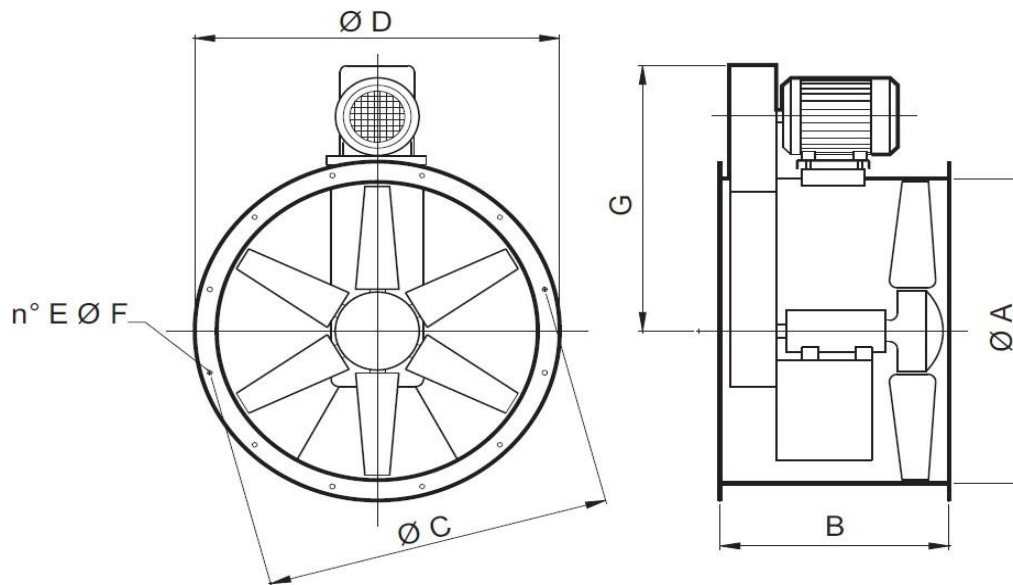
MOTOR

Single-phase 230V 50Hz,
 three-phase 230/400V 50Hz, 400/690V 50Hz,
 degree of protection IP 55,
 insulation class F,
 efficiency IE3
 for voltage regulation (single-phase motors),
 for frequency control (three-phase motors).





Indication dimensions



Model	Ø A	B	Ø C	Ø D	No E	Ø F
450	450	390	483	510	6	9
500	510	450	560	600	12	12
560	570	450	620	655	12	12
630	640	500	690	725	12	12
710	710	600	770	805	16	12
800	810	600	860	905	16	12
900	910	700	970	1010	16	16
1000	1010	800	1170	1115	16	16

Performances for the AXB = AXF - 5 %

