



## AXF Axial duct fan

Axial fans are used when a relatively large amount of air is needed in relation to the necessary pressure. They are used to supply or extract air in cabins, storage areas or production halls, for example. As well as the standard models there are also versions for applications with an explosion hazard or for extracting air at high temperatures. Axial fans are distinguished first and foremost by their mounting options.

<b>Sizes</b>	310 up to 1.600 mm
<b>Motor</b>	IP55, 230/1/50 or 400/3/50
<b>Capacity</b>	up to 200.000 m <sup>3</sup> /hr.
<b>Pressure</b>	up to 1.600 Pa
<b>Control</b>	Frequency converter
<b>Casing</b>	Steel / Aluminum / Stainless steel
<b>Impeller</b>	Plastic / Aluminum
<b>Airflow</b>	Motor ↔ Impeller / Impeller ↔ Motor
<b>Extra</b>	Motors for different voltages, frequencies and with certificates



## Application

The fan is intended for all types of general ventilation installations.

**Typical applications are:** General ventilation systems of commercial and industrial premises, ventilation of storage facilities ventilation of garages, public utility buildings, etc.

## Construction

Impeller is made of glass-fiber reinforced polypropylene, aluminum alloy, impeller is dynamically balanced in accordance with ISO 21940-11: 2016, welded steel sheet housing, bolted steel motor plate, flow direction impeller -> motor, inspection cover on the housing, installation in a horizontal or vertical position.

## Electric motor

Aluminum impeller, painting in a color other than the standard, painting in a higher corrosivity category,

galvanized steel sheet housing, housing made of stainless steel 1.4301, housing made of acid-proof steel 1.4404,

motor for other than standard voltage and power frequency, motor with a different degree of protection, motor with a different insulation class, motor equipped with sensors or additional cooling, fan with a diameter of more than 1250 mm.

## Accessories

Inlet cone / Silencers / Protection grid / Shutters / Inspection window / Flexible connections / Anti-vibration mounts / Support feet / Flanges / Switches / Terminal box / Frequency converters.

## On Request

single-phase 230V 50Hz,

three-phase 230/400V 50Hz, 400/690V 50Hz,

degree of protection IP 55,

insulation class F, efficiency IE3,

for voltage regulation (single-phase motors),

for frequency control (three-phase motors).





### 4 pole (1.500 rpm.) – 230/1/50

Model	Capacity max (m <sup>3</sup> /h)	50 Pa m <sup>3</sup> /h	75 Pa m <sup>3</sup> /h	100 Pa m <sup>3</sup> /h	Pressure max. (Pa stat.)	Motor (kW)	In max. (A)
315/4E/0.09	2.300	1.700	-	-	65	0,09	1,00
350/4E/0.09	3.200	2.800	2.400	1.250	130	0,09	1,00
400/4E/0.12	4.000	3.100	2.250	1.600	110	0,12	1,10
400/4E/0.18	5.200	4.700	4.000	2.000	120	0,18	1,40
450/4E/0.25	6.500	5.750	5.000	3.900	140	0,25	1,80
450/4E/0.37	7.600	6.800	6.100	5.000	120	0,37	3,30

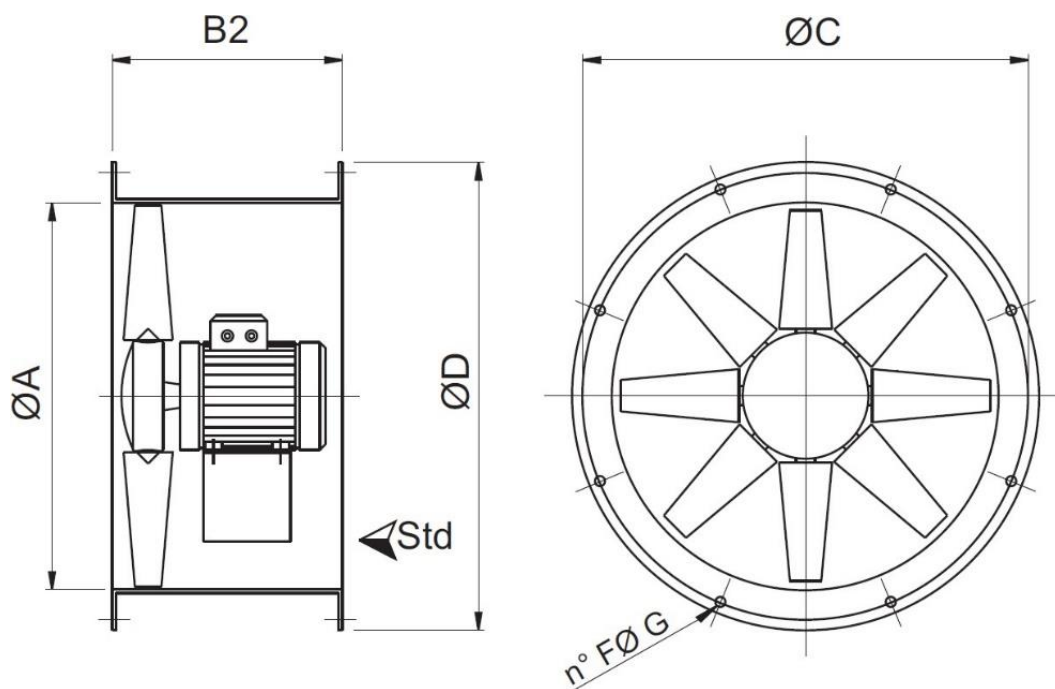
### 4 pole (1.500 rpm.) – 400/3/50

Model	Capacity max (m <sup>3</sup> /h)	50 Pa m <sup>3</sup> /h	150 Pa m <sup>3</sup> /h	300 Pa m <sup>3</sup> /h	Pressure max (Pa stat.)	Motor (kW)	In max (A)
315/4D/0.09	2.300	1.700	-	-	65	0,09	0,40
350/4D/0.09	3.200	2.800	-	-	130	0,09	0,40
400/4D/0.12	4.000	3.100	-	-	110	0,12	0,50
400/4D/0.18	5.200	4.700	-	-	120	0,18	0,60
450/4D/0.25	6.500	5.750	-	-	140	0,25	0,80
450/4D/0.37	7.600	6.800	-	-	120	0,37	1,20
500/4D/0.37	8.000	7.200	2.750	-	160	0,37	1,20
500/4D/0.55	9.000	8.250	3.000	-	180	0,55	1,60
560/4D/0.55	10.000	9.100	5.500	-	190	0,55	1,60
560/4D/0.75	12.500	11.600	7.400	-	195	0,75	2,00
630/4D/0.75	13.000	12.100	8.500	-	210	0,75	2,00
630/4D/1.10	16.000	15.100	12.300	-	220	1,1	2,80
630/4D/2.20	17.000	16.350	14.900	10.800	300	2,2	5,00
710/4D/1.50	17.000	15.800	12.400	-	240	1,5	3,50
710/4D/2.20	20.500	19.300	15.500	-	240	2,2	5,00
710/4D/2.20	18.500	18.500	16.800	-	280	2,2	5,00
710/4D/3.00	23.500	22.400	20.900	15.700	300	3	6,50
800/4D/3.00	24.000	23.000	21.000	17.000	530	3	6,50
800/4D/4.00	29.000	28.000	26.000	22.000	550	4	8,20
800/4D/5.50	35.000	34.000	32.000	28.000	570	5,5	11,0
800/4D/7.50	40.000	39.000	38.000	35.500	450	7,5	15,0
900/4D/5.50	38.000	37.000	34.500	30.000	600	5,5	11,0
900/4D/7.50	43.000	42.000	38.000	33.000	620	7,5	15,0
900/4D/7.50	47.000	46.000	42.500	37.500	470	7,5	15,0
900/4D/9.20	52.500	51.500	48.000	42.500	450	9,2	18,0
1000/4D/5.5	41.000	40.000	37.000	32.000	610	5,5	11,0
1000/4D/7.5	50.000	49.000	46.000	40.500	680	7,5	15,0
1000/4D/11	59.000	58.000	55.000	50.000	620	11	21,0
1000/4D/15	65.000	63.500	61.500	56.000	700	15	27,8
1000/4D/18.5	72.500	71.000	68.000	63.500	750	18,5	32,6
1125/4D/18.5	80.000	77.500	74.000	69.000	900	18,5	32,6
1125/4D/22	87.000	85.000	83.000	78.000	850	22	38,8
1125/4D/30	100.000	98.000	96.000	91.000	900	30	53,0





## Indication dimensions AXF-Duct



Model	Ø A	B2	Ø C	Ø D	F	G
310	310	400	355	390	8	10
350	360	400	395	430	8	10
400	410	400	450	490	8	12
450	460	450	500	540	8	12
500	510	450	560	600	12	12
560	570	450	620	655	12	12
630	640	500	690	725	12	12
710	710	600	770	805	16	12
800	810	600	860	905	16	12
900	910	700	970	1010	16	16
100	1010	800	1070	1115	16	16
1120	1130	800	1190	1235	20	16
1250	1260	800	1320	1365	20	16

